

MOTOR SPINDLES

840 series

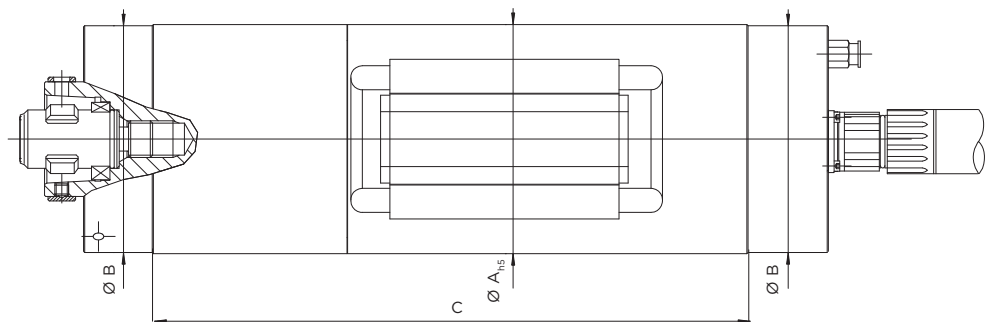


- Chuck** > For manual chucks, you can choose between a collet and an HSK.
- Rotational direction** > The collet version is suitable only for clockwise rotation. The HSK version can be operated clockwise or CCW.
- Lubrication** > Lifetime grease lubrication.
- Motor** > It is driven by a liquid-cooled, variable asynchronous motor. A frequency converter is used to control the motor up to its maximum speed. The temperature is monitored by PTC thermistors in the motor winding.
- Cooling** > It is cooled using an integral cooling circuit near the motor windings.
- Seal** > The tool side is sealed by a specifically proven labyrinth packing. This protects the spindle bearings against soiling. Spindles can be installed either horizontally or vertically.

> The **840 series** motor spindles are powerful high speed systems with a liquid-cooled drive. We only use ceramic spindle bearings. This gives higher speeds, improved wearing characteristics and a longer service life. Concentricity, measured at the chuck, is <0.002 mm. To manufacture these spindles, we only use selected materials that guarantee a high degree of accuracy and reliability even under extreme conditions.

- Standard delivery** > Operating instructions, operating tools
- Accessories** > Spindle holders, frequency converters, spindle coolers, collets.
- Mounting taper** > The tools are attached using an internal taper or a manual HSK chuck.

Type A

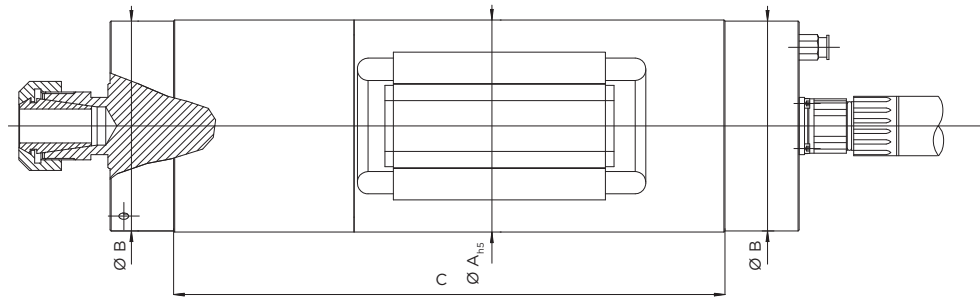


> 840 series > Type A

Part no.	Mechanical data				Electrical data				
	Ø A _{hs}	Ø B	Chuck	C	KW	rpm	Amp	Hz	Nm
VFS-840.000220	60	59.5	HSK-C25	129	1.4	40,000	3.5	1000	0.22
VFS-840.000230	80	79	HSK-C25	189.5	2.3	29,000	5.8	1000	0.75
VFS-840.000240	100	99	HSK-C40	260	7.2	29,600	18	1000	2.32
VFS-840.000241	100	99	HSK-C50	260	7.2	29,600	18	1000	2.32
VFS-840.000250	120	119.5	HSK-C50	310	13	24,700	28	834	5.00

Voltage: 400 V · Performance charts on request

Type B



> 840 series > Type B

Part no.	Mechanical data				Electrical data				
	Ø A _{hs}	Ø B	Chuck	C	KW	rpm	Amp	Hz	Nm
VFS-840.000020	60	59.5	ER 16	129	1.4	40,000	3.5	1000	0.22
VFS-840.000030	80	79	ER 16	189.5	2.3	29,000	5.8		0.75
VFS-840.000031	80	79	ER 16	189.5	2.3	29,000	5.8		0.75
VFS-840.000040	100	99	ER 25	260	7.2	29,600	18		2.32

Voltage: 400V · Performance charts on request